

IOWA 811

ONE CALLSM

The Official Newsletter of Iowa One Call

Vol. 30, No. 1


Excavator

QUARTERLY



- 01 What's Up Below
- 03 Mike Rowe Partnership
- 04 April Safe Digging Month
- 06 ESAP 2022
- 09 Iowa One Call Truck
- 10 In the News

WHAT'S UP BELOW



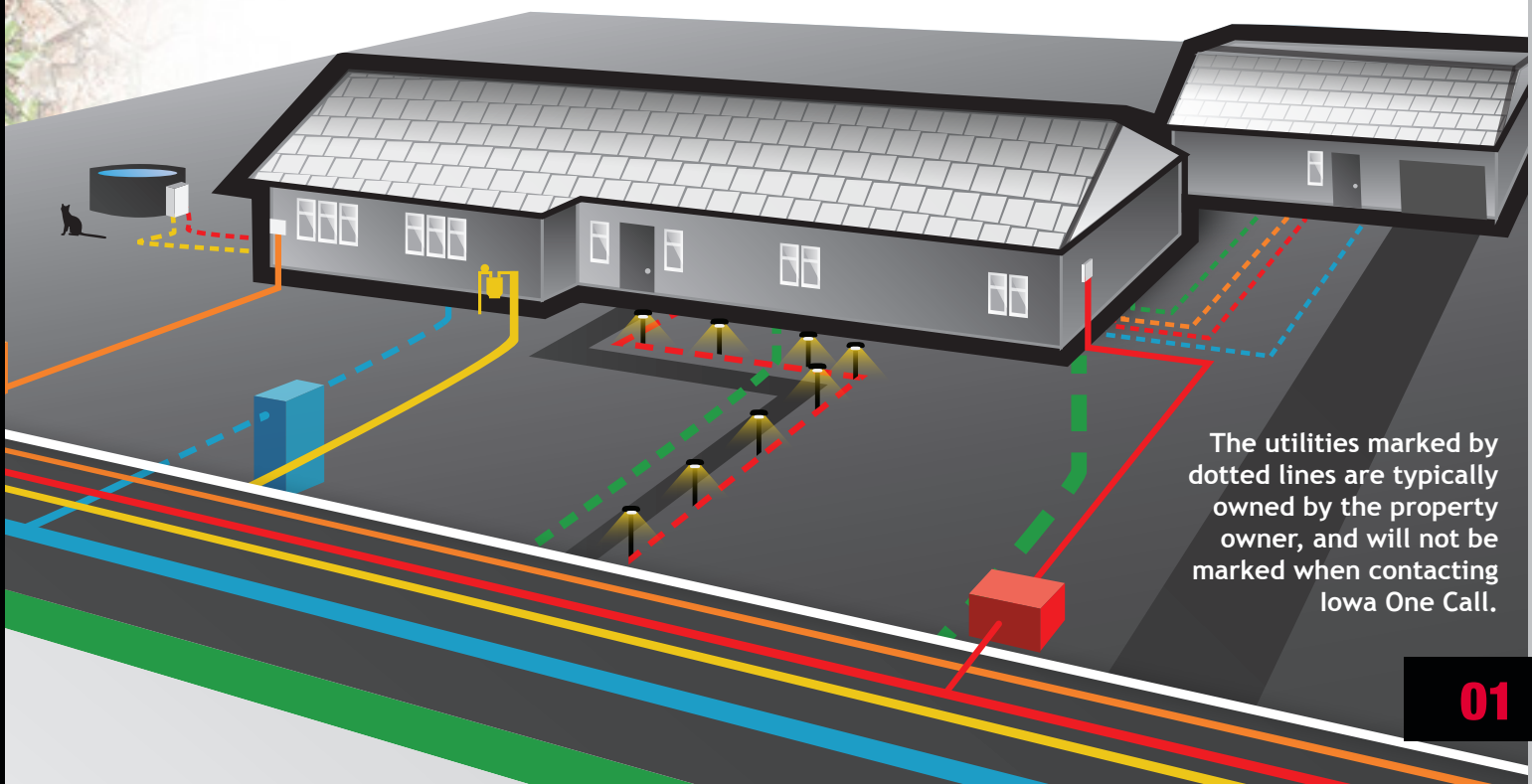
IOWA 811
ONE CALL SM

PRIVATE FACILITIES REVISITED (AGAIN)

As the 2022 dig season ramps up, excavators across Iowa will be breaking ground and contending with a multitude of potential obstacles that are typical to excavating operations, including inclement weather, project delays, and underground hazards. The latter is always a primary concern for excavators because of the potential safety risks. The locating and marking of underground facilities is a fundamental process – a safety tool – that helps to mitigate conflict between planned excavations and underground facilities. There is, however, a vast network of private underground facilities that will not be located and marked as part of the required “one call” process, requiring excavators to take additional precautions.

Excavators continually contact Iowa One Call with concerns regarding unmarked portions of what they believe to be underground facilities owned and operated by underground facility operators. Commonly, many of these “unmarked facilities” are actually private facilities that are not registered with the Iowa One Call system (Iowa law exempts private facility owners from required participation in the state’s one call notification system). This is an extremely important matter that excavators need to be aware of and familiar with because private facilities may include natural gas lines, electric lines and other potentially hazardous facilities.

It’s intuitive that facilities installed and buried by property owners for the sole benefit of said property owners are considered to be private facilities. These types of facilities may include an electric line run from a home to a detached garage or outbuilding, a gas line running to a gas grill, a communications line running from a home to an outbuilding, an “invisible dog fence,” a buried irrigation system, or any other facilities placed in the ground for the sole benefit of the property owner.





Not so intuitive are the types of private facilities that originate as underground facilities owned and operated by underground facility operators, but then become private facilities at an established demarcation point, such as a gas meter or electric transformer located away from any buildings or structures. Typically, this occurs on commercial properties. Excavators need to be aware of and familiar with these types of private facilities, which are often the basis for confusion and concerns. Excavators often assume that these types of private facilities are unmarked portions of underground facilities. Consider an excavator arriving at a jobsite to find gas and electric lines marked and flagged in areas located away from a building to one side of a gas meter or electric transformer. If the excavation is scheduled to occur near the building where there are no locate markings, the excavator might assume that it's safe to begin excavating believing that there are no conflicts with the buried gas and electric lines. In this type of situation the excavator may come across the portion of gas or electric lines that run from the demarcation point (gas meter and/or electric transformer) to the building – i.e.: “private facilities.” When this occurs excavators may believe that the

underground facility operators failed to locate and mark all of their facilities. More important are the potential hazards that exist since coming in contact with private gas and electric lines can be very dangerous.



In order to address potential liability matters, it is important that excavators discuss private facilities with property owners prior to excavating.

When arriving at any excavation site an excavator must strive to identify the presence of any private facilities. Common due diligence includes contacting the property owner who may be able to verify the presence of private facilities, and inspecting the property for any obvious or tell-tale signs indicating the presence of private facilities (e.g.: gas meters and electric transformers located

away from the property, detached structures and outbuildings with services – e.g.: gas, electric, communications water, etc.). Once it has been established that private facilities may be in conflict with a proposed excavation, the excavator needs to make any necessary arrangements to locate the private facilities. This may include hiring a private locator paid for by the property owner or the excavator (to be arranged by the excavator and property owner), or verifying the location of private facilities by using proper potholing techniques. In order to address potential liability matters, it is important that excavators discuss private facilities with property owners prior to excavating.

NOTE: A good example of a “tell-tale” sign indicating the presence of private facilities is when there are gas or electric markings applied on only one side of a gas meter or electric transformer (indicating the “incoming” lines owned by the facility operator bringing service to the demarcation point). In these instances, it is intuitive to assume that there are additional gas and electric lines running from the meter or transformer to any building or property located on a commercial site. It's important to note that some underground facility operators may adhere to different protocols (some may locate and mark the portion of gas/electric lines that run between the meter/transformer and the building/structure). Excavators should check with each different gas/electric operator to verify/ distinguish different locating and marking protocols (locators should be able to verify this information).

Other types of private facilities include propane lines and water and sewer laterals. All propane lines running from a propane storage tank to an abutting property are considered to be private (the local propane supplier is not required by law to locate propane lines). Iowa law defines

sanitary and storm sewer laterals and water service lines providing service to abutting properties as private facilities. Water and sewer facility operators are required to mark their mains, but this does not include the aforementioned lines that provide water and sewer services to the home, building or structure (often referred to as “laterals”).



Unfortunately, there are no “turn-key” safety and damage prevention processes available. Effective damage prevention always requires a multiple step approach, of which the required notice to Iowa One Call is but one step. Being prepared and knowing what to look for at a jobsite is essential to the safety and damage prevention process, as is the practice of establishing effective communications with all involved parties, including property owners, and most importantly, the locators who handle the locating and marking process. Checking for private facilities is a critical component of the safety and damage prevention process. Excavators need to understand that locating underground facilities not only requires a notice to Iowa One Call, but also requires additional efforts by the excavator to check for and establish the presence of private facilities. This does not necessarily mean that an excavator is responsible for any costs associated with hiring a private locator. This is a matter that the excavator will need to discuss with the property owner (the owner of the private facilities) to coordinate any necessary arrangements.

 ***Iowa One Call wishes everyone a safe and productive 2022. Dig safe!***

MIKE ROWE AND IOWA ONE CALL PARTNERSHIP

For the third year in a row, Iowa One Call partnered with celebrity Mike Rowe in an effort to promote damage prevention and safe digging practices. Mike Rowe serves as a national spokesperson for 811 and contacting 811 before you dig. Iowa One Call has seen great success in being able to leverage Mike Rowe’s likeness across the state of Iowa and effectively create awareness about the importance of calling 811 (or visiting iowaonecall.com) before digging.

The Mike Rowe campaign has provided great content and creative options for the team at Iowa One Call to deploy to the masses. Mike Rowe’s face and Iowa One Call can be seen on billboards, TV advertisements, radio ads, over-the-top (OTT) digital ads and on the Iowa One Call social media channels. Additionally, a monthly “toolkit” is produced with fresh Mike Rowe content focused on a specific damage prevention topic each month. The toolkit allows safety messages to be posted each week that are visually appealing and informative to followers of the Iowa One Call social media channels.





APRIL SAFE DIGGING MONTH PROCLAMATION



At the beginning of April, Common Ground Iowa (CGI) and Iowa One Call met with Governor Kim Reynolds, where she signed a proclamation declaring April as “Safe Digging Month” in Iowa. Proclaiming April as “Safe Digging Month” is an important way to educate Iowans about the importance of having their proposed excavation areas located and marked for underground facilities so they can avoid digging into potentially hazardous, or critical, underground gas or electric lines, communications cables, or water facilities. Iowa law requires all persons planning to engage in any activities that will disturb or displace the earth (e.g. digging, excavating, boring, drilling, removing concrete, installing posts, etc.) to first notify Iowa One Call by clicking online at www.iowaonecall.com or by dialing 811. This includes homeowners planning to work in their yards, farmers planning to work their fields, and professional contractors planning projects that will entail any type of digging.

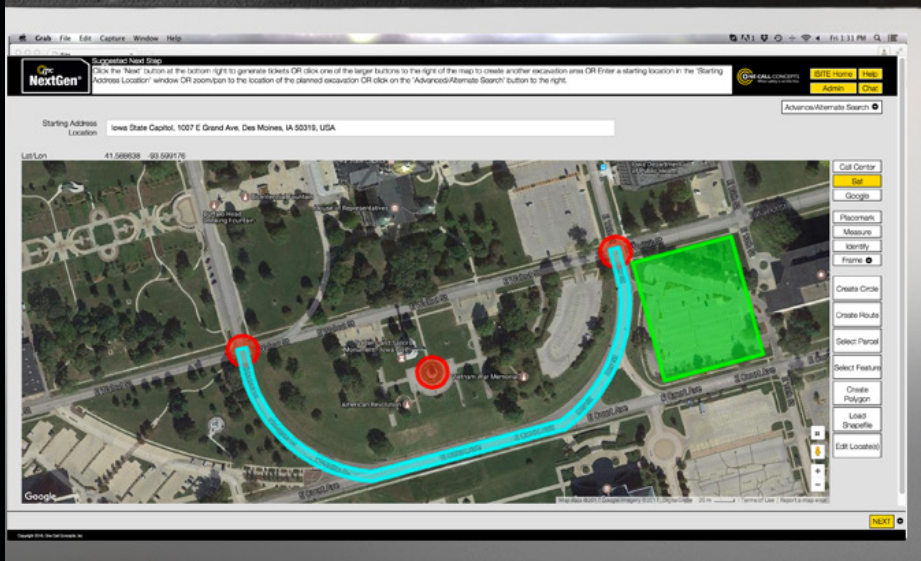
The Iowa Attorney General enforces the “Iowa One Call law” (Iowa Code chapter 480) and is authorized to seek civil penalties against any violators, which includes failure to notify Iowa One Call prior to digging. The civil penalties may range from as much as ten thousand dollars for each violation for each day the violation continues, up to a maximum of five hundred thousand dollars.



We thank Governor for her commitment every year to damage prevention and safe digging!



TIPS FOR MAPPING PRECISELY AND ACCURATELY



CHECK OUT THE NEXTGEN ONLINE TICKETING TUTORIAL [HERE!](#)

Use the right tool for the job – ITIC NextGen offers a diverse array of mapping options to fit every scenario.

2. Don't over-map – ITIC NextGen builds the locate request from the mapping. Over-mapping a work area can result in wasted time and resources.

3. Double-check your work – use the different map views and/or Google street view to help ensure you've mapped accurately and completely.



ESAP 2022

Overview

Iowa One Call was thrilled to welcome back contractors in-person during the 2022 Excavation Safety Awareness Program (ESAP). This year's program consisted of ten in-person meetings across key markets in the state of Iowa in January, and six virtual Zoom meetings in the month of February. The Zoom meetings have undoubtedly been an effective supplement to the in-person meetings, especially during the times of limitations imposed by COVID-19. However, being able to host contractors via in-person meetings and have face-to-face interactions with industry experts is invaluable and can never be replaced.

Given the rise of a virtual era, hosting a program that offers both in-person meetings and virtual meetings has proven to be highly effective and accommodates to factors like unpredictable weather and travel during the Iowa winter months, as well as offering professional contractors/locators/utilities more flexibility to their work schedules. Both online and in-person meetings have benefits, as well as drawbacks. For example, virtual meetings take away the ability to read non-verbal cues, which some research suggests makes for 80% of our communication. On the other hand, in-person meetings can lack inclusivity of individuals' communication styles. A perfect example of varying communication styles is the fact that over the last two years hosting Zoom ESAP webinars, the amount of questions received via the "chat" function was tenfold in comparison to the questions typically received at the in-person meetings.



Program Topics

The 2022 ESAP meetings honed in on relevant topics and issues that the industry is experiencing on a regular basis. Specifically, untimely locates, what causes the locating delays, and how to deal with these ongoing delays.

- **Construction Industry Growth**

The construction industry has been growing rapidly over the past decade, and with that comes a dramatic increase in excavations. To illustrate the exponential growth in excavations, in 2009 the outgoing ticket transmissions in Iowa was around 2.1 million; in 2020, the outgoing ticket transmission topped 3.5 million. That's a 67 percent increase over a span of around 11 years. On top of that, the fiber optic market has seen an exponential growth and will likely only continue to grow considering the increased demand for high-speed internet in a new digital era. Additionally, Iowa Governor Kim Reynolds recently approved a grant for a total of \$300 Million for rural fiber

overbuilds, which gives you an idea of how significant the demand for high speed internet and communications signals is.

- **Increased Demand for Locates**

Given the steady growth of the construction industry and increase in excavations, the need for locates is higher than ever before. To handle the increases in locating demand, utility operators and their third party locate contractors (e.g. USIC, Vanguard, etc.) have to ramp up enough personnel to handle the volume, while also factoring in costly endeavors such as more employee training, more vehicles and equipment, more planning and scheduling and more time constraints. Not to mention the extreme workforce challenges that are making it very difficult for employers to find candidates that are willing to work. It's evident that now more than ever teamwork and communication is needed among contractors, operators and locators alike.

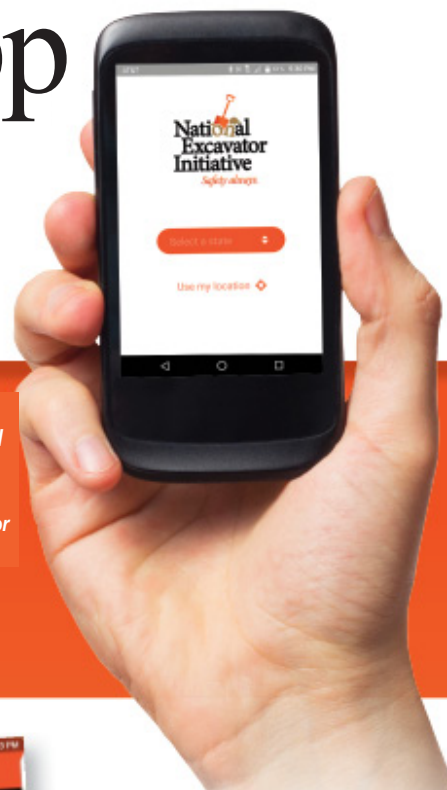
- **Mitigating Locating Delays**

Throughout the 2022 ESAP meetings, Iowa One Call discussed to the attending contractors some critical steps to take in order to mitigate these locating delays, given the increased volume of excavations and the resulting challenges faced by the locators. There is a new scheduling tool called the "Dynamic Start Time" that may help reduce locating delays. This new process will provide excavators with a voluntary option to push out their excavation start times whenever practical. Options to extend the start time of an excavation will range between half a day to 14 business days.



Another way excavators can help mitigate the issue of ongoing locating delays is to avoid submitting unnecessary/unreasonably large locate requests. By utilizing the online mapping tools via the ITIC Next Gen system, excavators can depict to the utility operators/locators exactly where the area of excavation will occur. This will free up time for the locators by not having to locate and mark massive areas of a large scope area. Additionally, the ESAP presentation delved in to the new online joint meet tool which gives excavators the ability to conveniently schedule a joint meet, which can certainly help mitigate locating delays by getting all parties together and discussing the exact scope of the work.

INTRODUCING THE Safe Excavator App



State laws pertaining to excavation (or digging) vary – and finding the specific information you’re looking for quickly can be a challenge.

The **Safe Excavator App** makes it easy to find state-specific excavation information including the following requirements or events:

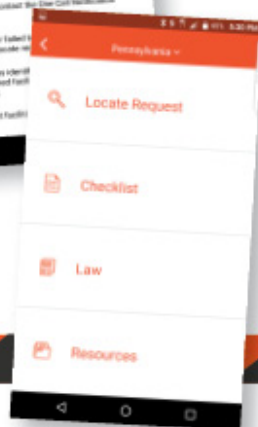
- ▼ Advance notice or wait time
- ▼ Pre-marking ('whitelining')
- ▼ 811 ticket information
- ▼ Names of local enforcement agencies and 811 call centers, also connecting you electronically to submit a locate request
- ▼ Includes safe digging tips + checklist

PLEASE CONTACT
Lindsay Sander
713.208.0273
LNS@SanderResources.com
WITH ANY QUESTIONS.



FREE to download in the App store (Apple) and Google Play (Android)

Search "safe excavator" or "safeexcavator" and look for the orange shovel



As simple as...
1...2...3!

- 1 Select a state
- 2 Pick an activity
- 3 Research your topic

www.safeexcavator.com



Know what's below.
811 before you dig.

The National Excavator Initiative is an effort to raise the awareness of a critically important program: 811.

Contacting 811 before digging is the single most critical action an excavator can take to help ensure their health and safety are protected, while at the same time preventing financial harm and environmental impact.



IOWA ONE CALL TRUCK

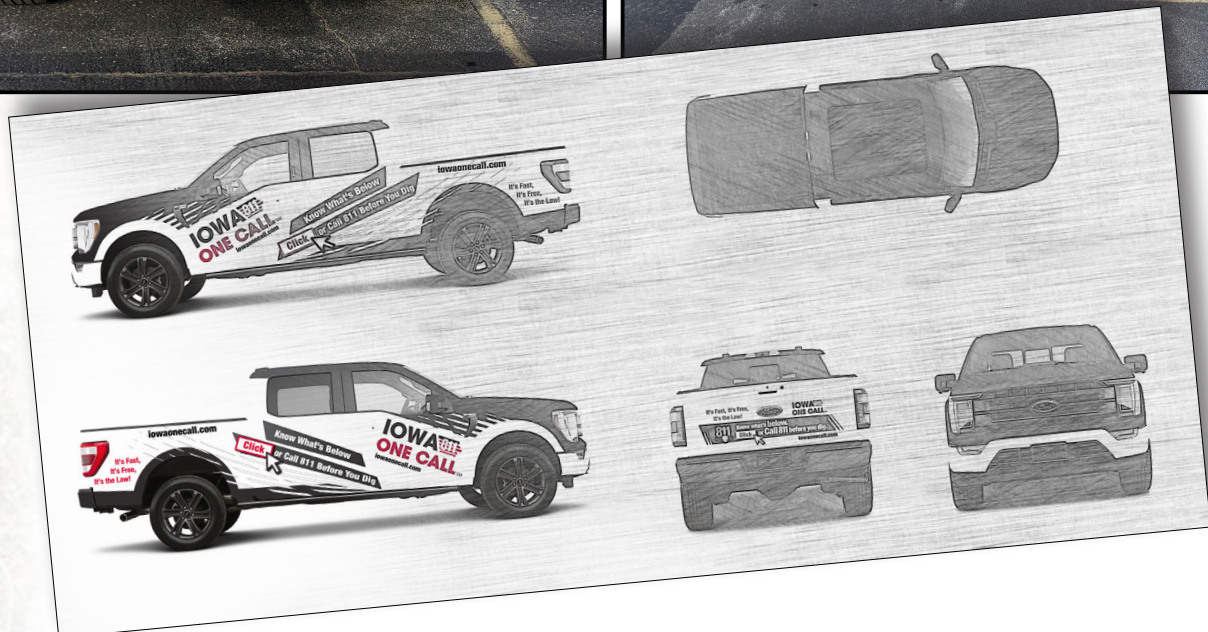
IOWA 811
ONE CALL SM

Iowa One Call is now 'on the road' with a new pickup truck! The IOC wrapped truck displays important messaging with an appealing design that will reach Iowa drivers on a daily basis, reminding them to "Click or Call 811 before you dig" and that it's a fast, free service that is required by law. Vehicle wrap advertising is one of the most effective forms of advertising in the market today, with a single vehicle wrap getting anywhere from 30,000 to 80,000 views per day, depending on how much driving is done. Essentially, this will give Iowa One Call a moving billboard that can be promoted across the entire state of Iowa.

The IOC truck was revealed to contractors at the 2022 Excavation Safety Awareness Program (ESAP) meetings in January, covering western Iowa markets such as Council Bluffs, Sioux City and Spencer, to the eastern part of the state in Cedar Rapids, Bettendorf and Burlington, and all cities in between.

Iowa One Call plans to leverage the truck and advertise at events like parades, trade shows, the Iowa State Fair and sporting events – including the Iowa One Call "811 Day" event that will take place at Principal Park – home of the Iowa Cubs.

When you're out on the road – be on the lookout for Iowa One Call on wheels!



IN THE NEWS



Local Excavation and Safety News From Around the Web



Arbor Day at Iowa Outdoor Products

<https://www.facebook.com/iowaonecall/posts/2683377338463389>

To celebrate Arbor Day - a day dedicated to public tree planting - we are giving away a Fiesta Sugar Maple tree from our friends at *Iowa Outdoor Products*! If you're in the West Des Moines area, tree planting will be done by Iowa Outdoor Products at the winner's residence at no charge. If you're outside of the West DSM area, winner will need to come pick up the tree and we will provide a gift card in addition to the tree.

To enter for your chance to WIN, comment on our **FaceBook post** with any activities that you're looking forward to once the warmer weather months arrive.

Winner to be announced on May 11th. Once the winner is announced they will need to coordinate with Iowa Outdoor Products to receive the tree. Good luck! ... [\[Learn More\]](#)

IOWA 811 ONE CALL



www.IOWAONECALL.com

This newsletter is published by Iowa One Call, Administrative Office, 9001 Hickman Road, Suite 220, Des Moines, Iowa 50322. Copyright © 2022 Iowa One Call. All rights reserved. These materials may not be reproduced without permission of Iowa One Call. Disclaimer: This publication is designed to provide general information in regard to the subject matter covered and should not be used as a substitute for professional service, advice or actual wording of regulations or standards in specific situations. The reader is cautioned that the publisher does not endorse or recommend specific Manufacturers, industry standards or practices and reliance should not be placed upon the information within this publication without confirming independent research.